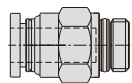


### Codice d'ordine

GPC 6 01 □

① ② ③ ④

① Modello	② Diametro tubo	③ Filetto	④ Colore	Specifiche	
GPC: Dritto maschio (G)	6 : $\Phi 6$ mm 8 : $\Phi 8$ mm 10 : $\Phi 10$ mm 12 : $\Phi 12$ mm	Filetto M5 : M5X0.8 01 : G1/8 02 : G1/4 03 : G3/8 04 : G1/2	Diametro tubo disponibile $\Phi 6, \Phi 8, \Phi 10, \Phi 12$	Colore Vuoto: grigio D: nero	Anello di rilascio: grigio Anello di rilascio: nero



### Specifiche

Pressione di lavoro	0~10kgf/cm <sup>2</sup> (0~1.0MPa)
Pressione negativa	-750mmHg(10Torr)
Pressione di prova	1.5MPa
Temperatura ambiente e del fluido (°C)	-20~70
Tuboidonei	Nylon e poliuretano
Colore	Grigio/Nero

### Tabella di correlazione filetto-tubo

Modello	Tipo di filettatura	Diametro tubo			
		$\Phi 6$	$\Phi 8$	$\Phi 10$	$\Phi 12$
GPC	M5	•			
	G1/8	•	•	•	•
	G1/4	•	•	•	•
	G3/8	•	•	•	•
	G1/2	•	•	•	•

### Caratteristiche prodotto

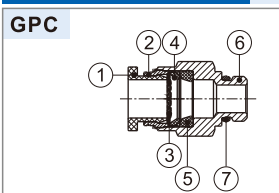
1. Struttura compatta, ingombri inferiori.

2. L'anello di rilascio può essere grigio o nero.

3. Il filetto è ricoperto da isolante mentre il filetto M5 ha una guarnizione piatta per prevenire le perdite d'aria dal collegamento filettato.



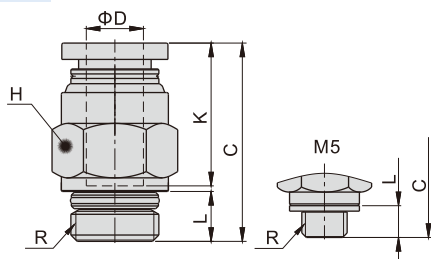
### Struttura interna



Nr.	Voce	Materiale
1	Anello di sgancio	POM
2	Guida	Legha di alluminio
3	Pinza	Acciaio inox
4	Tenuta	POM
5	O-ring	NBR
6	Corpo	Ottone
7	O-ring	NBR

### Dimensioni

#### GPC



Modello/Voce	$\Phi D$	R	L	C	K	H(Chiave)	Peso(g)	PCS/bag
GPC6M5	6	M5x0.8	3.5	22.5	16.5	12	8.5	10
GPC601		G1/8	5.5	22	16.35	12	7.1	10
GPC602		G1/4	6.5	21	16.35	14	11.5	10
GPC603		G3/8	7	20.5	16.35	19	23.2	10
GPC604		G1/2	8.5	20.5	16.35	22	37.9	10
GPC801	8	G1/8	5.5	26	18.5	14	10.7	10
GPC802		G1/4	6.5	25	18.5	14	10.5	10
GPC803		G3/8	7	22	18.5	19	21.5	10
GPC804	G1/2	8.5	23.5	18.5	22	36.2	10	
GPC1001	10	G1/8	5.5	29.5	20.9	17	13.2	10
GPC1002		G1/4	6.5	29	20.9	17	15.8	10
GPC1003		G3/8	7	25	20.9	19	18.2	10
GPC1004	G1/2	8.5	23.5	20.9	22	30.7	10	
GPC1201	12	G1/8	5.5	32	22.7	21	22.3	10
GPC1202		G1/4	6.5	33	22.7	21	25.4	10
GPC1203		G3/8	7	30.5	22.7	21	23.6	10
GPC1204		G1/2	8.5	27.5	22.7	22	31.7	10

### Codice d'ordine

GPC 6 01 □ - M

① ② ③ ④ ⑤

① Modello	② Diametro tubo	③ Filetto		④ Colore		⑤ Tipo
GPC: Dritto maschio (G) 	3.2 : $\Phi 3.2\text{mm}$ 4 : $\Phi 4\text{mm}$ 6 : $\Phi 6\text{mm}$	Filetto	Diametro tubo disponibile	Colore	Specifiche	M: Tipo miniaturizzato
GPL: Gomito maschio (G) 		M3 : M3X0.5	$\Phi 3.2, \Phi 4$	Vuoto: grigio	Anello di rilascio: grigio	
		M5 : M5X0.8	$\Phi 3.2, \Phi 4, \Phi 6$			
		O1 : G1/8	$\Phi 4, \Phi 6$	D: nero	Anello di rilascio: nero	
O2 : G1/4	$\Phi 4$					

### Specifiche

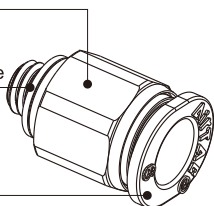
<b>Pressione di lavoro</b>	<b>0~10kgf/cm<sup>2</sup>(0~1.0MPa)</b>
Pressione negativa	-750mmHg(10Torr)
Pressione di prova	1.5MPa
Temperatura ambiente e del fluido (°C)	-20~70
Tuboidonei	Nylon e poliuretano
Colore	Grigio/Nero

### Tabella di correlazione filetto-tubo

Modello	Tipo di filettatura	Diametro tubo		
		$\Phi 3.2$	$\Phi 4$	$\Phi 6$
GPC GPL	M3	•	•	
	M5	•	•	•
	G1/8		•	•
	G1/4		•	

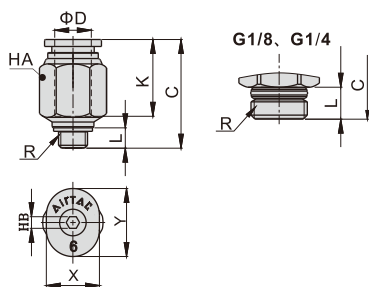
### Caratteristiche prodotto

1. Struttura compatta, ingombri inferiori.
2. Il filetto è ricoperto da isolante mentre il filetto M5 ha una guarnizione piatta per prevenire le perdite d'aria dal collegamento filettato.
3. L'anello di rilascio può essere grigio o nero.

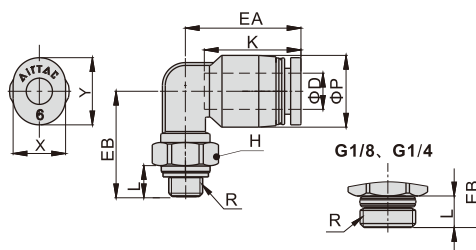


### Dimensioni

#### GPC



#### GPL



Modello/Voce	ΦD	R	L	C	K	X	Y	HA	HB	Peso(g)	PCS/bag
GPC3.2M3-M	3.2	M3×0.5	3	16	11.5	6.8	8.7	7	1.5	1.7	10
GPC3.2M5-M		M5×0.8	3.5	16	11.5	6.8	8.7	7	2	2.0	10
GPC4M3-M	4	M3×0.5	3	17.5	12.5	7.8	9.5	8	1.5	2.4	10
GPC4M5-M		M5×0.8	3.5	17	12.5	7.8	9.5	8	2	2.7	10
GPC401-M		G1/8	5.5	16	13.5	7.8	9.5	10	3	3.6	10
GPC402-M	G1/4	6.5	16.5	13.5	7.8	9.5	14	3	9.5	10	
GPC6M5-M	6	M5X0.8	3.5	18.5	13.5	9.8	11.7	10	2	3.6	10
GPC601-M		G1/8	5.5	18.5	15.5	9.8	11.7	11	4	6.0	10

Modello/Voce	ΦD	R	ΦP	L	K	EA	EB	H	X	Y	Peso(g)	PCS/bag
GPL3.2M3-M	3.2	M3×0.5	7.5	3	12	14.5	14	7	6.8	8.7	2.4	10
GPL3.2M5-M		M5×0.8		3.5	12		14.5	7	6.8	8.7	2.7	10
GPL4M3-M	4	M3×0.5	8.5	3	12.5	15	14	7	7.8	9.5	3.0	10
GPL4M5-M		M5×0.8		3.5	12.5		14.5	7	7.8	9.5	3.3	10
GPL401-M		G1/8		5.5	12.5		14	10	7.8	9.5	6.2	10
GPL402-M	G1/4	6.5	12.5	6.5	12.5	16.5	14	7.8	9.5	14.1	10	
GPL6M5-M	6	M5X0.8	10.5	3.5	13.5	16.0	15.5	7	9.8	11.7	4.0	10
GPL601-M		G1/8		5.5	13.5		14.5	10	9.8	11.7	6.8	10

### Codice d'ordine

Diametro tubo costante

**GPL 6 01** □

① ② ③ ④

① Modello	② Diametro tubo	③ Filettatura	④ Colore	
<b>GPHW: Gomito maschio doppio(G)</b> 	<b>GPL: Gomito maschio(G)</b> 	M5: M5X0.8 4: Φ4mm 6: Φ6mm 8: Φ8mm 10: Φ10mm 12: Φ12mm	Filetto Diametro tubo disponibile Colore Specifiche Modello disponibile	
<b>GPHF: Gomito femmina(G)</b> 	<b>GPLL: Gomito maschio alto(G)</b> 		Vuoto: grigio Anello di rilascio: grigio Corpo: grigio	GPCF GPMF Others
<b>GPEB: T con maschio centrale(G)</b> 	<b>GPLF: Gomito femmina(G)</b> 			
<b>GPED: T con maschio laterale(G)</b> 	<b>GPCF: Dirittofemmina(G)</b> 		D: nero Anello di rilascio: nero Corpo: nero	GPCF GPMF Others
<b>GPYB: Giunto a Y(G)</b> 	<b>GPMF: Passaparete(G)</b> 			
<b>GPZB: Croce con filetto(G)</b> 	<b>GPH: Gomito maschio(G)</b> 		01: G1/8 02: G1/4 03: G3/8 04: G1/2	

Modelli con tubi diversi

**GPKD 6 - 4 01** □

① ② ③ ④ ⑤

① Modello	② Diametro tubo	③ Diametro tubo	④ Filettatura	⑤ Colore
<b>GPKD: Raccordo maschio triplo (G)</b> 	6: Φ6mm 8: Φ8mm 10: Φ10mm	4: Φ4mm 6: Φ6mm 8: Φ8mm	01: G1/8 02: G1/4 03: G3/8	Colore Specifiche Vuoto: grigio Anello di rilascio: grigio/Corpo: grigio D: nero Anello di rilascio: nero/Corpo: nero

### Specifiche

Pressione di lavoro	0~10kgf/cm <sup>2</sup> (0~1.0MPa)
Pressione negativa	-750mmHg(10Torr)
Pressione di prova	1.5MPa
Tubidonei	Nylon e poliuretano
Temperatura ambiente e del fluido	-20~70 °C
Colore	Grigio/Nero

### Caratteristiche prodotto

- Questi modelli possono essere usati in diversi tipi di impianti pneumatici.
- Portata elevata: garantiscono la piena portata del diametro interno del tubo collegato.
- Innestare il tubo è semplice, e la tenuta è salda e durevole.
- Il filetto è ricoperto da isolante mentre il filetto M5 ha una guarnizione piatta per prevenire le perdite d'aria dal collegamento filettato.
- Il corpo nichelato è protetto dalla corrosione e non è inquinante.

### Struttura interna

No.	Voce	Material
1	Anello di sgancio	POM
2	Guida	Legia di alluminio
3	Pinza	Acciaioinox
4	Tenuta	POM
5	O-ring	NBR
6	Body	PBT
7	O-ring	NBR
8	Stud	Ottone
9	O-ring	NBR

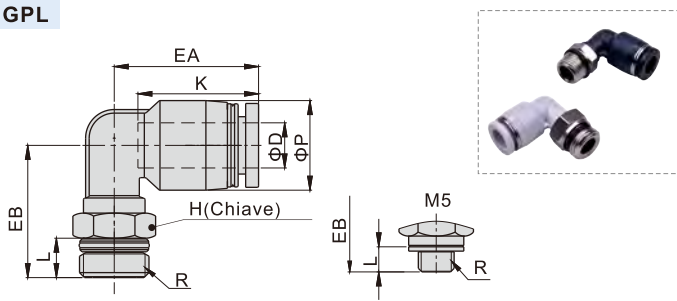
### Tabella di correlazione filetto-tubo

Modello	Tipo di filettatura	Diametro tubo				
		Φ4	Φ6	Φ8	Φ10	Φ12
GPL	M5	•	•	•	•	•
	G1/8					
	G1/4	•	•	•	•	•
	G3/8	•	•	•	•	•
GPLL	G1/2	•	•	•	•	•
	M5	•	•			
	G1/8	•	•	•	•	
	G1/4	•	•	•	•	•
GPEB	G3/8	•	•	•	•	
	G1/2	•	•	•	•	•
	M5	•	•			
	G1/8	•	•	•	•	
GPMF	G1/4	•	•	•	•	•
	G3/8	•	•	•	•	•
	G1/2	•	•	•	•	•
	M5	•	•			
GPH	G1/8	•	•	•		
	G1/4	•	•	•	•	
	G3/8	•	•	•	•	•
	G1/2	•	•	•	•	•
GPYB	G1/8	•	•	•		
	G1/4	•	•	•	•	
	G3/8	•	•	•	•	•
	G1/2	•	•	•	•	•
GPZB	G1/8	•	•	•		
	G1/4	•	•	•	•	
	G3/8	•	•	•	•	•
	G1/2	•	•	•	•	•

## Raccordi innesto rapido—Modello filettato

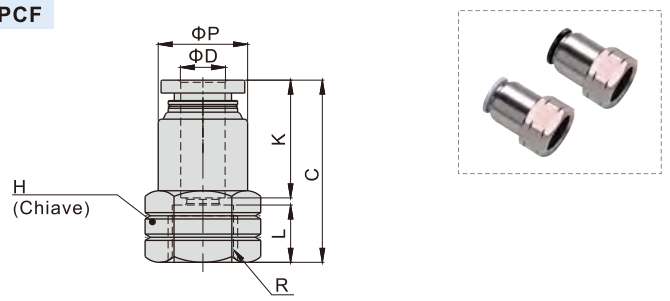
### Dimensioni

#### GPL



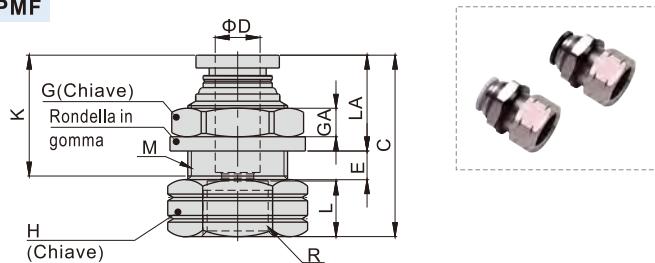
Modello/Voce	ΦD	R	ΦP	L	K	EA	EB	H	Peso(g)	PCS/bag
GPL6M5	6	M5×0.8	12.5	3.5	17	20	17.0	8	4.5	10
GPL601		G1/8	12.5	5.5	17	20	18.5	10	5.2	10
GPL602		G1/4	12.5	6.5	17	20	22.0	14	11.9	10
GPL603		G3/8	12.5	7	17	20	23.0	19	20.5	10
GPL604	8	G1/2	12.5	8.5	17	20	26.5	22	32.7	10
GPL801		G1/8	15	5.5	18.5	23	19.0	10	6.9	10
GPL802		G1/4	15	6.5	18.5	23	24.0	14	12.2	10
GPL803		G3/8	15	7	18.5	23	24.0	19	21	10
GPL804	G1/2	15	8.5	18.5	23	27.5	22	32.7	10	
GPL1001	10	G1/8	18	5.5	21	25.5	24.5	17	16.3	10
GPL1002		G1/4	18	6.5	21	25.5	25.0	17	17.4	10
GPL1003		G3/8	18	7	21	25.5	25.5	19	21	10
GPL1004		G1/2	18	8.5	21	25.5	29.0	22	33.7	10
GPL1201	12	G1/8	21	5.5	23	28.5	26.0	17	18.8	10
GPL1202		G1/4	21	6.5	23	28.5	26.5	17	19.9	10
GPL1203		G3/8	21	7	23	29.5	30.5	19	27.4	10
GPL1204		G1/2	21	8.5	23	29.5	30.5	22	33.7	10

#### GPCF



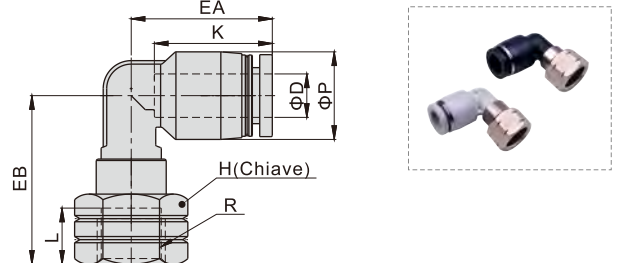
Modello/Voce	ΦD	R	ΦP	L	C	K	H	Peso(g)	PCS/bag
GPCF4M5	4	M5×0.8	9	5	21	14	10	2.7	10
GPCF401		G1/8	9.5	8	23	14	14	4.5	10
GPCF402		G1/4	9.5	11	26	14	17	6.5	10
GPCF6M5		M5×0.8	12	5	21.5	16.5	12	3.9	10
GPCF601	6	G1/8	12.5	8	25.5	16.5	14	5.6	10
GPCF602		G1/4	12.5	11	28.5	16.5	17	7.5	10
GPCF603		G3/8	13	12	29.5	16.5	21	10.7	10
GPCF604		G1/2	13	13.5	31.0	16.5	25	13.8	10
GPCF801	8	G1/8	14	8	27.5	18.5	14	5.8	10
GPCF802		G1/4	14.5	11	30.5	18.5	17	8.4	10
GPCF803		G3/8	14.5	12	31.5	18.5	21	11.2	10
GPCF804		G1/2	14.5	13.5	33	18.5	25	14.4	10
GPCF1001	10	G1/8	17	8	29	21	17	9.5	10
GPCF1002		G1/4	17	11	33	21	17	9.9	10
GPCF1003		G3/8	18	12	34	21	21	14	10
GPCF1004		G1/2	18	13.5	35.5	21	25	17.1	10
GPCF1202	12	G1/4	21	11	33.5	23	21	17.5	10
GPCF1203		G3/8	21	12	35.5	23	21	16.6	10
GPCF1204		G1/2	21	13.5	37	23	25	19.7	10

#### GPMF



Modello/Voce	ΦD	R	M	L	C	K	LA	E	GA	G	H	Peso(g)	PCS/bag
GPMF401	4	G1/8	M12X1	8	25	14	12.0	4	4	14	14	6.4	10
GPMF402		G1/4	M12X1	11	29	14	12.0	4	4	14	17	9	10
GPMF601	6	G1/8	M14X1	8	25.5	16.5	12.5	5	4	17	17	9.1	10
GPMF602		G1/4	M14X1	11	30.5	16.5	12.5	5	4	17	17	10.9	10
GPMF603		G3/8	M14X1	12	31.5	16.5	12.5	5	4	17	21	13.2	10
GPMF801		G1/8	M16X1	8	27.5	18.5	13.5	5.5	4	19	19	12.8	10
GPMF802	8	G1/4	M16X1	11	32	18.5	13.5	5.5	4	19	19	15.7	10
GPMF803		G3/8	M16X1	12	33	18.5	13.5	5.5	4	19	21	15	10
GPMF804	G1/2	M16X1	13.5	34.5	18.5	13.5	5.5	4	19	25	18.1	10	
GPMF1001	10	G1/8	M20X1	8	30	21	14.5	7.5	5	24	22	19.6	10
GPMF1002		G1/4	M20X1	11	35	21	14.5	7.5	5	24	22	22.8	10
GPMF1003		G3/8	M20X1	12	36	21	14.5	7.5	5	24	22	21.1	10
GPMF1004		G1/2	M20X1	13.5	37.5	21	14.5	7.5	5	24	25	23.2	10
GPMF1202	12	G1/4	M22X1	11	34.5	23	15.5	8	6	27	24	26.2	10
GPMF1203		G3/8	M22X1	12	37.5	23	15.5	8	6	27	24	27	10
GPMF1204		G1/2	M22X1	13.5	39	23	15.5	8	6	27	25	26.2	10

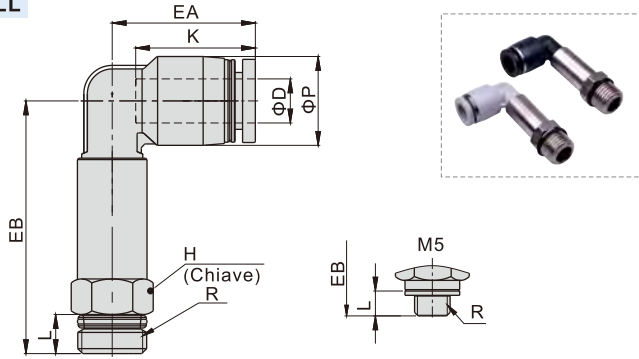
#### GPLF



Modello/Voce	ΦD	R	ΦP	L	K	EA	EB	H	Peso(g)	PCS/bag
GPLF4M5	4	M5×0.8	9	5	14	17	16	10	2.9	10
GPLF401		G1/8	9	8	14	17	21	14	4.6	10
GPLF402		G1/4	9	11	14	17	24	17	6.8	10
GPLF6M5	6	M5×0.8	12.5	5	17	20	18.5	10	7	10
GPLF601		G1/8	12.5	8	17	20	23	14	5.8	10
GPLF602		G1/4	12.5	11	17	20	26	17	8	10
GPLF603		G3/8	12.5	12	17	20	27	21	10.7	10
GPLF801	8	G1/8	15	8	18.5	23	20	14	6.6	10
GPLF802		G1/4	15	11	18.5	23	27.5	17	9.2	10
GPLF803		G3/8	15	12	18.5	23	28.5	21	11.9	10
GPLF804		G1/2	15	13.5	18.5	23	30	25	15.2	10
GPLF1001	10	G1/8	18	8	21	25.5	24	17	11.3	10
GPLF1002		G1/4	18	11	21	25.5	26.5	17	11.2	10
GPLF1003		G3/8	18	12	21	25.5	30	21	14.5	10
GPLF1004		G1/2	18	13.5	21	25.5	31.5	25	17.4	10
GPLF1202	12	G1/4	21	11	23	28.5	28.5	17	13.7	10
GPLF1203		G3/8	21	12	23	29.5	32	21	17.4	10
GPLF1204		G1/2	21	13.5	23	29.5	33	25	20.4	10

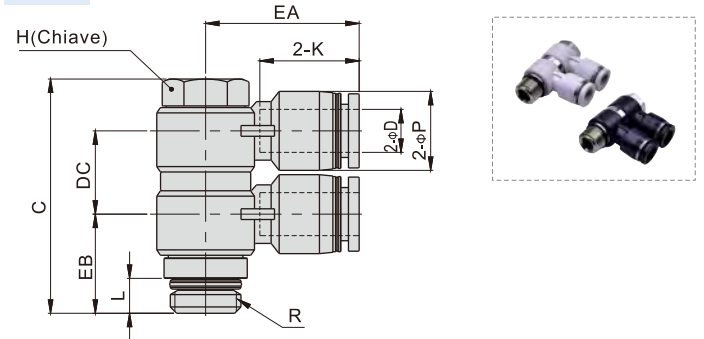
## Raccordi innesto rapido—Modello filettato

### GPLL



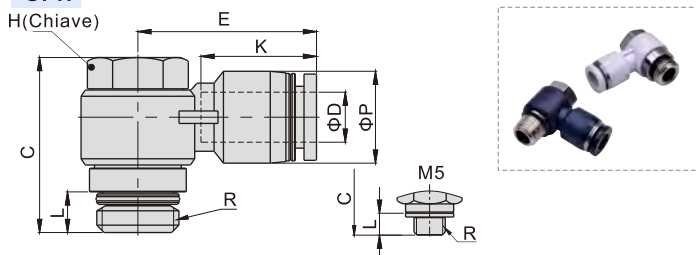
Modello/Voce	ΦD	R	ΦP	L	K	EA	EB	H	Peso(g)	PCS/bag
GPLL4M5	4	M5×0.8	9	3.5	14	17	32.5	8	8.9	10
GPLL401		G1/8	9	5.5	14	17	33.5	10	11.4	10
GPLL402	6	G1/4	9	6.5	14	17	36.5	14	15.3	10
GPLL6M5		M5×0.8	12.5	3.5	17	20	34.5	8	9.9	10
GPLL601	6	G1/8	12.5	5.5	17	20	35.5	10	12.1	10
GPLL602		G1/4	12.5	6.5	17	20	38.5	14	16.4	10
GPLL603	8	G3/8	12.5	7	17	20	41	19	24	10
GPLL801		G1/8	15	5.5	18.5	23	43	12	16.4	10
GPLL802	8	G1/4	15	6.5	18.5	23	43.5	14	21.1	10
GPLL803		G3/8	15	7	18.5	23	46	19	28.5	10
GPLL1001	10	G1/8	18	5.5	21	25.5	50	15	37.3	10
GPLL1002		G1/4	18	6.5	21	25.5	51.5	15	39	10
GPLL1003	10	G3/8	18	7	21	25.5	52.5	19	41.5	10
GPLL1004		G1/2	18	8.5	21	25.5	53.5	22	44.1	10
GPLL1202	12	G1/4	21	6.5	23	28.5	56	15	44	10
GPLL1203		G3/8	21	7	23	29.5	58	19	56.8	10
GPLL1204	12	G1/2	21	8.5	23	29.5	59.5	22	53.4	10

### GPHW



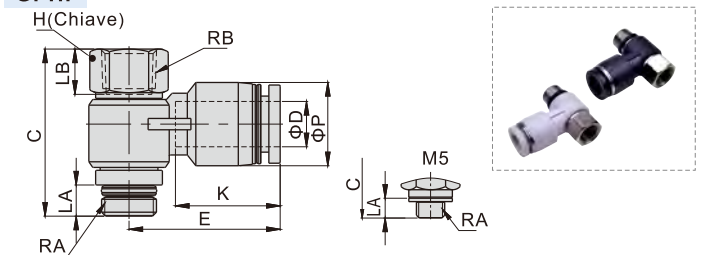
Modello/Voce	ΦD	R	ΦP	L	C	K	EA	EB	DC	H	Peso(g)	PCS/bag
GPHW401	4	G1/8	9	5.5	38	14	20.5	14.5	13	11	19	10
GPHW601	6	G1/8	12.5	5.5	38	16.5	23.0	15	13	11	21	10
GPHW602		G1/4	12.5	6.5	43.5	16.5	25.0	17.5	15.5	14	40.2	10
GPHW603	8	G3/8	12.5	7	50	16.5	27.0	20	16.5	19	69.2	5
GPHW801		G1/8	15	5.5	40.5	18.5	26.5	16.5	15.5	11	23.6	10
GPHW802	8	G1/4	15	6.5	43.5	18.5	28.5	18.5	15.5	14	40.8	10
GPHW803		G3/8	15	7	50	18.5	29.5	20	16.5	19	70.4	5
GPHW804	10	G1/2	15	8.5	61	18.5	32	24.5	22	24	134.8	5
GPHW1002		G1/4	18	6.5	46.5	21	31	20	18.5	14	47	10
GPHW1003	10	G3/8	18	7	55	21	33	21	22	19	87.5	5
GPHW1004		G1/2	18	8.5	61	21	35.5	25	22	24	137.7	5
GPHW1203	12	G3/8	21	7	55	23	36	23	22	19	86.4	5
GPHW1204		G1/2	21	8.5	61	23	38	26.5	22	24	147.5	5

### GPH



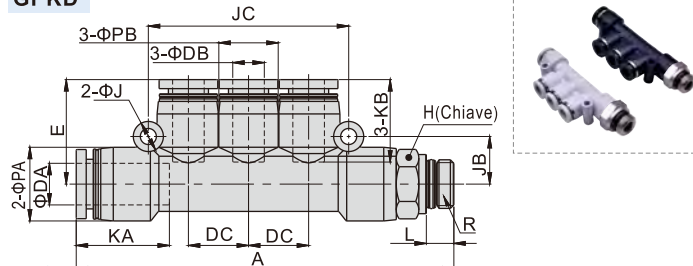
Modello/Voce	ΦD	R	ΦP	L	C	K	E	H	Peso(g)	PCS/bag
GPH4M5	4	M5×0.8	9	3.5	17	14	19	8	5.8	10
GPH401		G1/8	9	5.5	25	14	20.5	11	12.8	10
GPH6M5	6	M5×0.8	12.5	3.5	17	16.5	23.5	8	6.8	10
GPH601		G1/8	12.5	5.5	25	16.5	23	11	14	10
GPH602	6	G1/4	12.5	6.5	28	16.5	25	14	25.4	10
GPH603		G3/8	12.5	7	33	16.5	27	19	50.2	5
GPH801	8	G1/8	15	5.5	25	18.5	26.5	11	14.7	10
GPH802		G1/4	15	6.5	28	18.5	28.5	14	26.4	10
GPH803	8	G3/8	15	7	33	18.5	29.5	19	49.4	5
GPH804		G1/2	15	8.5	39	18.5	32	24	89	5
GPH1002	10	G1/4	18	6.5	28	21	31	14	27.7	10
GPH1003		G3/8	18	7	33	21	33	19	51.1	5
GPH1004	10	G1/2	18	8.5	39	21	35.5	24	88.5	5
GPH1203		12	G3/8	21	7	33	23	36	19	53
GPH1204	G1/2		21	8.5	39	23	38	24	92.8	5

### GPHF



Modello/Voce	ΦD	RA	RB	ΦP	LA	LB	C	K	E	H	Peso(g)	PCS/bag
GPHF4M5	4	M5×0.8	M5×0.8	9	3.5	6	20	14	19	8	6.2	10
GPHF401		G1/8	G1/8	9	5.5	8	29.5	14	20.5	12	12.9	10
GPHF6M5	6	M5×0.8	M5×0.8	12.5	3.5	6	20	16.5	23.5	8	7.1	10
GPHF601		G1/8	G1/8	12.5	5.5	8	29.5	16.5	23	12	13.9	10
GPHF602	6	G1/4	G1/4	12.5	6.5	11	35	16.5	25	17	30.3	10
GPHF603		G3/8	G3/8	12.5	7	12	40	16.5	27	19	44.2	5
GPHF801	8	G1/8	G1/8	15	5.5	8	29.5	18.5	26.5	12	15	10
GPHF802		G1/4	G1/4	15	6.5	11	35	18.5	28.5	17	30.7	10
GPHF803	8	G3/8	G3/8	15	7	12	40	18.5	29.5	19	44.8	5
GPHF804		G1/2	G1/2	15	8.5	13.5	47.5	18.5	32	24	84.7	5
GPHF1002	10	G1/4	G1/4	18	6.5	11	35	21	31	17	32	10
GPHF1003		G3/8	G3/8	18	7	12	40	21	33	19	46.2	5
GPHF1004	10	G1/2	G1/2	18	8.5	13.5	47.5	21	35.5	24	86.1	5
GPHF1203		12	G3/8	G3/8	21	7	12	40	23	36	19	48.4
GPHF1204	G1/2		G1/2	21	8.5	13.5	47.5	23	38	24	89.7	5

### GPKD



Modello/Voce	ΦDA	ΦDB	R	L	A	ΦPA	ΦPB	KA	KB
GPKD6-401	6	4	G1/8	5.5	66	12.5	9	16.5	14
GPKD8-602	8	6	G1/4	6.5	77	15	12.5	18.5	16.5
GPKD10-803	10	8	G3/8	7	89.5	18	15	21	18.5

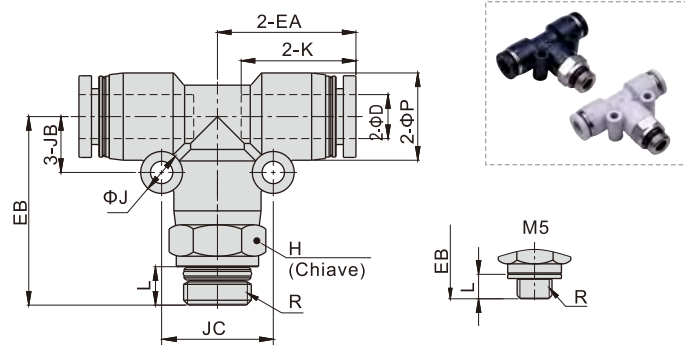
  

Modello/Voce	ΦJ	JB	JC	DC	E	H	Peso(g)	PCS/bag
GPKD6-401	3.2	8	34	10	17.5	12	14.9	2
GPKD8-602	3.2	9.5	40	12	21	14	24.9	2
GPKD10-803	4.3	11	48	14.5	24	19	39	2

# Accessori—raccordi innesto rapido

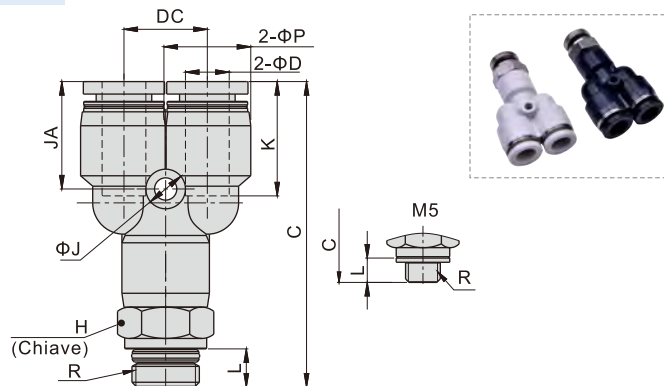
## Raccordi innesto rapido—Modello filettato

### GPEB



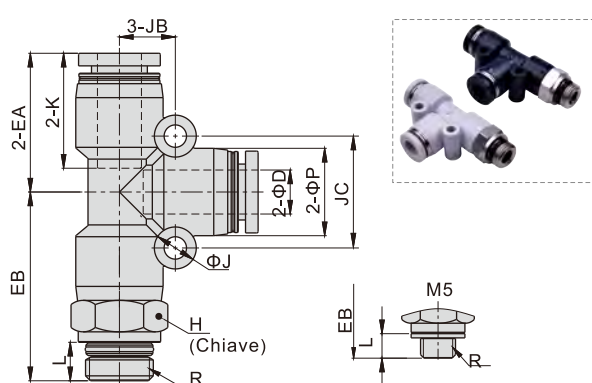
Modello\Voce	ΦD	R	ΦP	L	K	EA	EB	ΦJ	JB	JC	H	Peso(g)	PCS/bag
GPEB4M5	M5×0.8	9	3.5	14	17	21	3.2	6.5	13	9	6.8	10	10
GPEB401	4	G1/8	9	5.5	14	17	23	3.2	6.5	13	10	7.9	10
GPEB402	4	G1/4	9	6.5	14	17	26	3.2	6.5	13	14	13.9	10
GPEB6M5	M5×0.8	12.5	3.5	16.5	20	23.5	3.2	8	16	12	11.2	10	10
GPEB601	6	G1/8	12.5	5.5	16.5	20	27	3.2	8	16	12	13.3	10
GPEB602	6	G1/4	12.5	6.5	16.5	20	28.5	3.2	8	16	14	17	10
GPEB603	6	G3/8	12.5	7	16.5	20	30	3.2	8	16	19	26.1	10
GPEB801	8	G1/8	15	5.5	18.5	23	30	4.3	9.5	19	14	18.2	10
GPEB802	8	G1/4	15	6.5	18.5	23	31	4.3	9.5	19	14	19.7	10
GPEB803	8	G3/8	15	7	18.5	23	32.5	4.3	9.5	19	19	29	10
GPEB804	8	G1/2	15	8.5	18.5	23	35	4.3	9.5	19	22	37.7	10
GPEB1001	10	G1/8	18	5.5	21	26.5	33.5	4.3	11	22	17	26.5	10
GPEB1002	10	G1/4	18	6.5	21	26.5	34.5	4.3	11	22	17	27.6	10
GPEB1003	10	G3/8	18	7	21	26.5	35.5	4.3	11	22	19	32.7	10
GPEB1004	10	G1/2	18	8.5	21	26.5	38	4.3	11	22	22	42.1	10
GPEB1202	12	G1/4	21	6.5	23	30	39	4.3	13	26	21	48	10
GPEB1203	12	G3/8	21	7	23	30	40	4.3	13	26	21	49.1	10
GPEB1204	12	G1/2	21	8.5	23	30	41.5	4.3	13	26	22	54	10

### GPYB



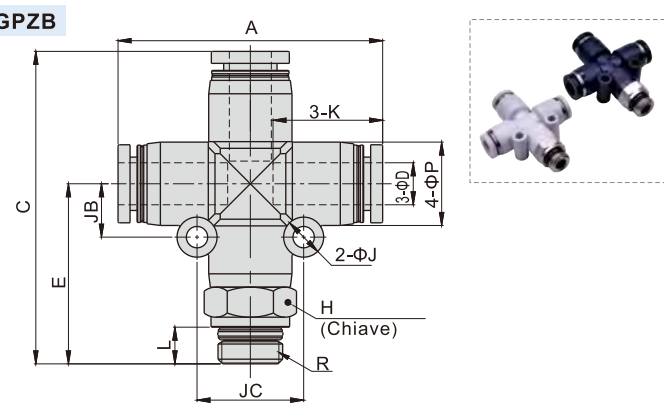
Modello\Voce	ΦD	R	ΦP	L	C	K	ΦJ	JA	DC	H	Peso(g)	PCS/bag
GPYB4M5	M5×0.8	9	3.5	35.5	14	3.2	13	10	9	6.7	10	10
GPYB401	4	G1/8	9	5.5	37.5	14	3.2	13	10	8.1	10	10
GPYB402	4	G1/4	9	6.5	40.5	14	3.2	13	10	9.2	10	10
GPYB6M5	M5×0.8	12.5	3.5	40.5	16.5	3.2	15.5	12	12	11.1	10	10
GPYB601	6	G1/8	12.5	5.5	44	16.5	3.2	15.5	12	12	13.5	10
GPYB602	6	G1/4	12.5	6.5	45.5	16.5	3.2	15.5	12	14	16.6	10
GPYB603	6	G3/8	12.5	7	47.0	16.5	3.2	15.5	12	19	25.8	10
GPYB801	8	G1/8	15	5.5	50	18.5	3.2	17	14.5	14	19.6	10
GPYB802	8	G1/4	15	6.5	50.5	18.5	3.2	17	14.5	14	20.4	10
GPYB803	8	G3/8	15	7	52	18.5	3.2	17	14.5	19	28.5	10
GPYB804	8	G1/2	15	8.5	55	18.5	3.2	17	14.5	22	37.5	10
GPYB1001	10	G1/8	18	5.5	56	21	4.3	19.5	18	17	27.2	10
GPYB1002	10	G1/4	18	6.5	57	21	4.3	19.5	18	17	27.9	10
GPYB1003	10	G3/8	18	7	58	21	4.3	19.5	18	19	33.3	10
GPYB1004	10	G1/2	18	8.5	60.5	21	4.3	19.5	18	22	42.1	10
GPYB1202	12	G1/4	21	6.5	64	23	4.3	21	20.5	21	25.7	10
GPYB1203	12	G3/8	21	7	65	23	4.3	21	20.5	21	49.7	10
GPYB1204	12	G1/2	21	8.5	66	23	4.3	21	20.5	22	53.5	10

### GPED



Modello\Voce	ΦD	R	ΦP	L	K	EA	EB	ΦJ	JB	JC	H	Peso(g)	PCS/bag
GPED4M5	M5×0.8	9	3.5	14	17	21	3.2	6.5	13	9	6.8	10	10
GPED401	4	G1/8	9	5.5	14	17	23	3.2	6.5	13	10	7.9	10
GPED402	4	G1/4	9	6.5	14	17	26	3.2	6.5	13	14	13.9	10
GPED6M5	M5×0.8	12.5	3.5	16.5	20	23.5	3.2	8	16	12	11.2	10	10
GPED601	6	G1/8	12.5	5.5	16.5	20	27	3.2	8	16	12	13.3	10
GPED602	6	G1/4	12.5	6.5	16.5	20	28.5	3.2	8	16	14	17	10
GPED603	6	G3/8	12.5	7	16.5	20	30	3.2	8	16	19	26.1	10
GPED801	8	G1/8	15	5.5	18.5	23	30	4.3	9.5	19	14	18.2	10
GPED802	8	G1/4	15	6.5	18.5	23	31	4.3	9.5	19	14	19.7	10
GPED803	8	G3/8	15	7	18.5	23	33	4.3	9.5	19	19	29	10
GPED804	8	G1/2	15	8.5	18.5	23	35	4.3	9.5	19	22	37.7	10
GPED1001	10	G1/8	18	5.5	21	26.5	34	4.3	11	22	17	26.5	10
GPED1002	10	G1/4	18	6.5	21	26.5	35	4.3	11	22	17	27.6	10
GPED1003	10	G3/8	18	7	21	26.5	36	4.3	11	22	19	32.7	10
GPED1004	10	G1/2	18	8.5	21	26.5	38	4.3	11	22	22	42.1	10
GPED1202	12	G1/4	21	6.5	23	30	39	4.3	13	26	21	48	10
GPED1203	12	G3/8	21	7	23	30	40	4.3	13	26	21	49.1	10
GPED1204	12	G1/2	21	8.5	23	30	41.5	4.3	13	26	22	54	10

### GPZB



Modello\Voce	ΦD	R	L	A	E	C	ΦP	K	ΦJ	JB	JC	H	Peso(g)	PCS/bag
GPZB601	6	G1/8	5.5	27	47	12.5	16.5	3.2	8	16	12	15	10	10
GPZB602	6	G1/4	6.5	39.5	28.5	48.5	16.5	3.2	8	16	14	18.8	10	10
GPZB603	6	G3/8	7	30	50	15	18.5	4.3	9.5	19	19	27.8	10	10
GPZB801	8	G1/8	5.5	30	53	15	18.5	4.3	9.5	19	14	20.7	10	10
GPZB802	8	G1/4	6.5	46	31	54	15	18.5	4.3	9.5	14	22.2	10	10
GPZB803	8	G3/8	7	32.5	55.5	15	18.5	4.3	9.5	19	19	30.7	10	10
GPZB804	8	G1/2	8.5	35	58	15	18.5	4.3	9.5	19	22	40.2	10	10
GPZB1002	10	G1/4	6.5	35	61	17	18.5	4.3	9.5	19	17	31.9	10	10
GPZB1003	10	G3/8	7	52.5	36	62	18	21	4.3	11	22	19	37.3	10
GPZB1004	10	G1/2	8.5	38	64.5	18	21	4.3	11	22	22	45.9	10	10
GPZB1203	12	G3/8	7	40	70	21	23	4.3	13	26	21	54.4	10	10
GPZB1204	12	G1/2	8.5	59.5	41.5	71.5	21	23	4.3	13	26	62.1	10	10

## Raccordi innesto rapido in metallo

### Codice d'ordine

**GBPC 6 01**



① Modello		② Diametro tubo	③ Filetto
GBPC: Connettore diretto maschio in metallo(G)	GBPCF: Connettore diretto femmina in metallo(G)	4 : Φ4mm 6 : Φ6mm 8 : Φ8mm 10 : Φ10mm 12 : Φ12mm	M5 : M5X0.8 01 : G1/8 02 : G1/4 03 : G3/8 04 : G1/2
GBPMF: Passaparete femmina in metallo (G)			

### GBPM 6



① Modello	② Diametro tubo
GBPM: Passaparete femmina in metallo (G)	4 : Φ4mm 6 : Φ6mm 8 : Φ8mm 10 : Φ10mm 12 : Φ12mm

## Specification

<b>Operating pressure range</b>	<b>0~9kgf/cm<sup>2</sup>(0~0.9MPa)</b>
Negative pressure	-750mmHg(10Torr)
Proof pressure	1.5MPa
Ambient and fluid temperature (°C)	0~150
Applicable tubing	Soft nylon or polyurethane
Color	Gray/black

Nota: la resistenza alle alte temperature deve essere confermata prima dell'utilizzo.

## Caratteristiche prodotto

1. Portata elevata; la portata di questi raccordi è pari alla portata del tubo innestabile.
2. Innestare il tubo è semplice, e la tenuta è salda e durevole.
3. Il filetto è ricoperto da isolante mentre il filetto M5 ha una guarnizione piatta per prevenire le perdite d'aria dal collegamento filettato.
4. Il corpo è sottoposto a nichelatura, che garantisce una buona resistenza alla corrosione.
5. I raccordi metallici possono essere usati in applicazioni con alte temperature.

## Tabella di correlazione filetto-tubo

Modello	Tipo di filettatura	Diametro tubo				
		Φ4	Φ6	Φ8	Φ10	Φ12
GBPC	M5	•	•			
	G1/8	•	•	•	•	
	G1/4	•	•	•	•	•
	G3/8		•	•	•	•
GBPCF	G1/2				•	•
	M5	•	•			
	G1/8	•	•	•		
	G1/4		•	•	•	
GBPMF	G3/8				•	•
	G1/2					•
	M5					
	G1/8	•	•	•		
GBPM	G1/4		•	•	•	
	G3/8				•	•
	G1/2					•
	Φ4	•	•	•	•	•
	Φ6		•	•	•	•

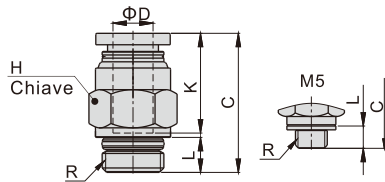
## Struttura interna

GBPC		
Nr.	Voce	Materiale
1	Anello metallico	Ottone
2	Guida	Legha di alluminio
3	Sede	Acciaio inox
4	Pinza	Legha di alluminio
5	O-ring speciale	Viton
6	Corpo	Ottone
7	O-ring	NBR

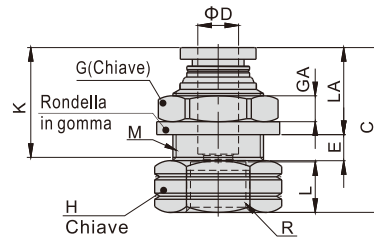
## Raccordi innesto rapido in metallo

### Dimensioni

#### GBPC



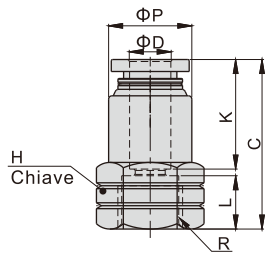
#### GBPMF



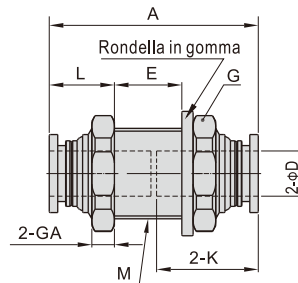
Modello/Voce	ΦD	R	L	C	K	H	Peso(g)	PCS/bag
GBPC4M5	4	M5X0.8	3.5	19.5	14	9	5.5	10
GBPC401		G1/8	5.5	16.5	13	10	7.9	10
GBPC402		G1/4	6.5	17	13	14	8.7	10
GBPC6M5	6	M5X0.8	3.5	22	16	12	10.1	10
GBPC601		G1/8	5.5	21.5	16	12	13.8	10
GBPC602		G1/4	6.5	20.5	16	14	15.1	10
GBPC603	8	G3/8	7	20	16	19	26	10
GBPC801		G1/8	5.5	25.5	18	14	13.3	10
GBPC802		G1/4	6.5	24.5	18	14	13.5	10
GBPC803	10	G3/8	7	21.5	18	19	25.9	10
GBPC1001		G1/8	5.5	28.5	20.5	17	17.2	10
GBPC1002		G1/4	6.5	28	20.5	17	19.8	10
GBPC1003	12	G3/8	7	24	20.5	19	32.3	10
GBPC1004		G1/2	8.5	22.5	19.5	22	31.9	10
GBPC1202		G1/4	6.5	32.5	22	21	29.4	10
GBPC1203	12	G3/8	7	30	22	21	29.3	10
GBPC1204		G1/2	8.5	27	22	22	37.2	10

Modello/Voce	ΦD	R	M	L	C	K	LA	E	GA	G	H	Peso(g)	PCS/bag
GBPMF401	4	G1/8	M12X1	8	25	14	12	4	4	14	14	7.6	10
GBPMF601	6	G1/8	M14X1	8	25	16	12	5	4	17	17	10.4	10
GBPMF602		G1/4	M14X1	11	30	16	12	5	4	17	17	12.2	10
GBPMF801	8	G1/8	M16X1	8	27	18	13	5.5	4	19	19	13.9	10
GBPMF802		G1/4	M16X1	11	31.5	18	13	5.5	4	19	19	15.3	10
GBPMF1002	10	G1/4	M20X1	11	34.5	20.5	14	7.5	5	24	22	26.2	10
GBPMF1003		G3/8	M20X1	12	35.5	20.5	14	7.5	5	24	22	24.4	10
GBPMF1203	12	G3/8	M22X1	12	37	22	15	8	5	27	24	32.6	10
GBPMF1204		G1/2	M22X1	13.5	38.5	22	15	8	5	27	25	31.8	10

#### GBPCF



#### GBPM



Modello/Voce	ΦD	R	ΦP	L	C	K	H	Peso(g)	PCS/bag
GBPCF4M5	4	M5X0.8	9	5	21	14	10	3.5	10
GBPCF401		G1/8	9.5	8	23	14	14	5.3	10
GBPCF6M5	6	M5X0.8	12	5	21	16	12	5.6	10
GBPCF601		G1/8	12.5	8	25	16	14	7.2	10
GBPCF602	8	G1/4	12.5	11	28	16	17	9.2	10
GBPCF801		G1/8	14	8	27	18	14	7.1	10
GBPCF802	10	G1/4	14.5	11	30	18	17	10.6	10
GBPCF1002		G1/4	17	11	32.5	20.5	17	13.5	10
GBPCF1003	12	G3/8	18	12	33.5	20.5	21	17.5	10
GBPCF1203		G3/8	21	12	35	22	21	22	10
GBPCF1204	12	G1/2	21	13.5	36.5	22	21	24.9	10

Modello/Voce	ΦD	M	A	K	L	E	G(Chiave)	GA	Peso(g)	PCS/bag
GBPM4	4	M12X1	28.5	14	10	7	14	4	6.4	10
GBPM6	6	M14X1	33	16	10	11	17	4	16.4	10
GBPM8	8	M16X1	37	18	11	13	19	4	15.8	10
GBPM10	10	M20X1	41.5	20.5	12	16	24	5	28.9	10
GBPM12	12	M22X1	45	22	13	17.5	27	6	40.3	10